

STARGATE SH11

From Aquarama creativity and innovation
the future takes shape



AQUARAMA[®]
CAR WASH SYSTEM

STARGATE SH11

- Innovative technological solutions
- Technology built to last
- High quality washing



The gantry model shown is equipped with optional



Stargate SH11. Versatility is its strength!



Possibility to wash in touchless mode only with HP Gantry

Possibility to wash only with Brushes Gantry Possibility



AN EXCLUSIVE WASHING QUALITY!
The first gantry that can totally wash in high pressure for a stunning washing result.

TOUCHLESS HP GANTRY

Thanks to the photocells' barrier it is possible to detect any shape of the vehicle, maximizing the contact of the horizontal brush and the passage of the drying blade.



■ High precision of detection

Automatic detection of particular shapes (I. E. Pickup, Skibox, Lightbars, etc.)

■ High Speed Detection

First pass of Drying Gantry up to 20 m/min..

■ High Smoothness of Functioning

Drying blade - Horizontal brush. Horizontal High Pressure



HP WHEEL WASHER

Rotating head with 3 high pressure nozzles for a thorough cleaning of rims, wheels arches and sills.



PRE-WASH WITH MOUSSE ATTIVA®

For a perfect adherence to the bodywork. Precise setting with high flow metering pump. An acid and two alkaline chemical products.



ROOF HIGH PRESSURE

Rotating and oscillating nozzles on contour following beam and adjustable to 4 positions, for a complete washing of the body and of the lower bumper. Always with optimal distance and angle.



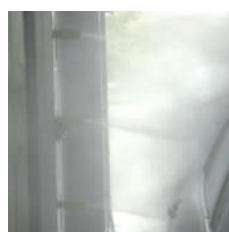
PERFECT DRYING IN ONLY ONE PASSAGE.

Stainless steel horizontal blade following the vehicle profile, tilting in 3 positions. Inclined side vents. Four electric blowers 5,5 kW/each.



WAX APPLICATION

The wax is applied using a contour following wax arch and laterally delivered by nozzles positioned close to the vehicle sides, for a perfect water-repellent effect.



SIDE HIGH PRESSURE

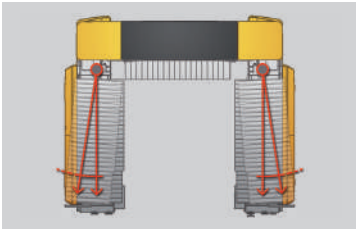
Rotating and oscillating nozzles that can be divided into 3 sections according to the profile of the vehicle for water saving.





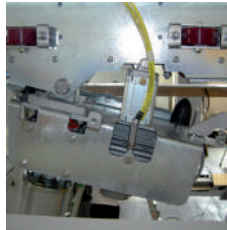
BRUSH GANTRY

STARGATE SH11



SENSITIVE SIDE BRUSHES

Tilting side brushes, electronically controlled, perfectly adapting to the profile of the car.



TILT AND LOCK

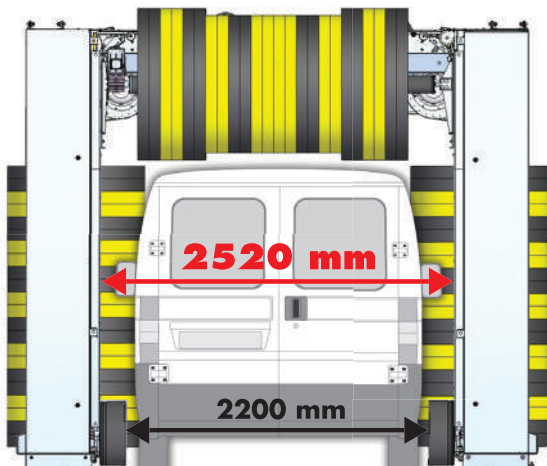


WAX APPLICATION

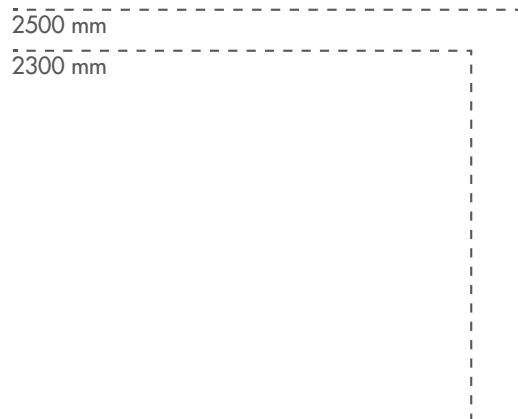
The wax is applied using a contour following wax arch and laterally delivered by nozzles positioned close to the vehicle sides, for a perfect water-repellent effect.

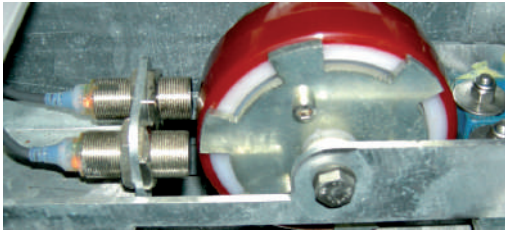
MORE SPACE FOR BIG VEHICLES WIDE VEHICLE PASSAGE CAN BE INSTALLED IN SMALL WASH BAYS.

Washing width



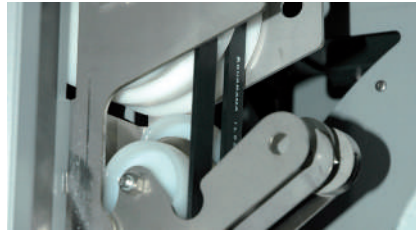
Available washing heights





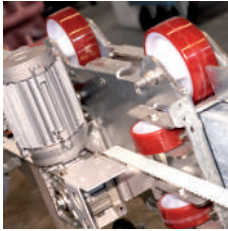
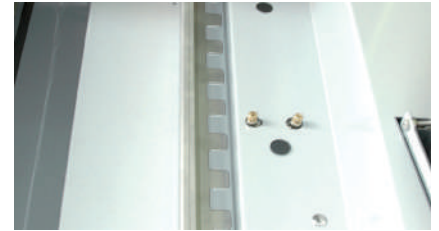
DRIVE AND LIFT SENSOR

Measurement movements with two sensors for maximum precision and reliability.



SECURITY

Lifting belt loosening alarm.
Blade anti-fall locking system on drying.



LOW MAINTENANCE THANKS TO SELF-LUBRICATING MATERIALS

Innovative materials for silent movements requiring no lubrication or maintenance.



SEVEN FREQUENCY CONVERTERS

The seven frequency converters deliver a rapid smooth pass, for a precise wash on every part of the vehicle.



A wide range of accessories, a few examples...



WHEEL WASHER

Tilting wheel washer with fully integrated rotating high pressure, for a thorough clearing of rims, wheel arches and flanks.



LED TRAFFIC LIGHT INTEGRATED IN THE GANTRY LEG

Wide traffic light with LEDs, sliding display. Perfect also in bright light conditions.

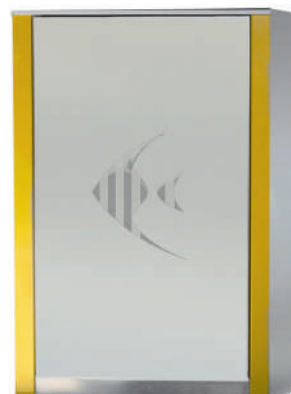


STAINLESS STEEL WHEEL WASHER

The reversal of rotation and inclination of the brush allows a thorough clearing of the rims of every dimension.

HIGH PRESSURE PUMPS SYSTEM

Choices of 126 or 168 liters high pressure pumps system, for a powerful pre-wash. Available in insulated outdoor cabinet or in frame for technical room.



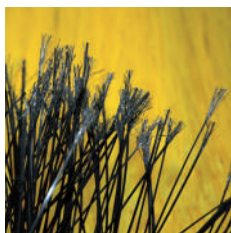
CABINET



FRAME

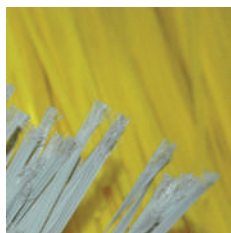
Brushes available

POLYETHYLENE



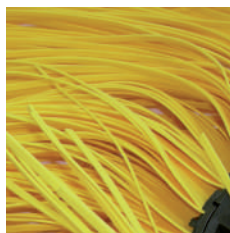
La setola in polietilene garantisce un risultato ottimale dall'investimento moderato.

FILOK



Rispetto alle "Polietilene" sono leggere e delicate a contatto della vernice. La sezione larga e piatta consente di frizionare accuratamente le superfici.

CARLITE PROFILE



Sono leggere e più delicate a contatto della vernice. Consigliate per macchine equipaggiate con alta pressione.

CARLITE PROFILE STRING



A differenza delle Carlite Profile hanno le stringhe più piccole per una maggiore pulizia nei dettagli. Consigliate per macchine equipaggiate con alta pressione.

TEXTILE



Nuove, molto delicate a contatto della vernice. La sezione delle setole è molto larga. Ottime per lucidare. Consigliate per macchine equipaggiate con alta pressione.

Colours available



Yellow
Ral 1003



Red
Ral 3001



White

Self service system - control units

The control unit has been designed for simple and intuitive use. Wide liquid crystal display. Secure payment system for 24 hours use.

The operator can configure each passage to create personalized programs.
Possibility for the customer to add any optionals to the selected basic wash.

It accepts



Touch



Smart Coin Card
with a value
or a program



Banknotes



Coins and/or
tokens



Certified payment system
for self-service banking
transactions with bank
card and Smartphone.



It delivers



Receipt (no fiscal)



Smart Coin Card
Self Service Top Line only



Coins
and/or tokens
2 hoppers

Structure

- Hot dip galvanized and painted steel structure
- ABS plastic claddings (optional)
- Direct gantry drive with frequency converter
- High resistance rivets "aeronautic" type
- Stainless steel bolts

Side high pressure

- 5 rotating and oscillating nozzles for high impact force and complete coverage of the body
- Stainless steel structure
- Can be divided in 3 sections according to the vehicle's profile
- Powered rotating head with 3 nozzles for wheels and low flanks

Roof high pressure

- 6 rotating and oscillating nozzles for high impact force and complete coverage of the vehicle
- Contour following stainless steel structure tilting in to 4 positions
- Ground clearance for cleaning plates and bumpers
- Front and rear double pass
- Electric uplift with frequency converter
- Stainless steel sliding guides

Vertical brushes

- Hot dip galvanized steel single cross beam
- Electrical positioning drive with frequency converter
- Double cross over on front and back of the vehicle
- Double inclination and locking by cylinder
- Electronic power control

Horizontal brush

- Electrical uplift with frequency converter
- Electronic power control
- Stainless steel sliding guides
- Fall prevention system and belts loosening detection

Drying

- Contour following 3 positions tilting stainless steel horizontal blade
- Electric uplift with frequency converter
- Stainless steel sliding guides
- Side drying with 2 electric blowers
- Fall prevention system (with spring-loaded hook) and belts loosening detection

Standard equipment

- Hydraulic system with dedicated solenoid valves and piping
- Shampoo dosing pump
- Wax dosing pump
- Single festoon supply system (wall hanging)
- Fully integrated preset self-service kit

AQUARAMA Srl

Località Piano, 38 - 12060 Novello (CN) - ITALIA

Tel. +39 0173 776822 - Fax +39 0173 792501 - info@aquarama.it



Follow us on



TECHNICAL FEATURES

Dimensions Stargate SH11 (in millimetres)

Washing height	2.300	2.500
Machine height	*3.300 (3.180)	*3.500 (3.360)
Machine width	*3.715 (3.500)	
Washing width	2.520	
Machine depth	*3.950 (3.250)	
Machine weight	1.900 + 1.700	2.000 + 1.800
Distance between rails	3.000 (2.500 upon demand)	
Rails length	13.000	

*Max dimensions with ABS claddings

() Dimensions with standard aluminium cladding

Hall or washing bay dimensions for vehicles 5 meters long (in millimetres)

Height	*3.400 (3.300)	*3.600 (3.500)
Width	**4.100 (4.600)	
Lunghezza Length	*13.700 •• **13.450 • (13.300) •••(12.750)	

*Dimensions with ABS claddings

**With optional safety anti-crush device.

() Dimensions with standard aluminium cladding

Technical data sheet

Drive speed	m/min	0-22
Water pressure	Bar/l	3-5
Air pressure	Bar	8
Voltage	V/Hz	400 3/N/PE 50
Total power	kW	30
Control voltage	V	24
Drying power	kW	4x5,5

High pressure pumps (optional)

Water high pressure	Bar	80
---------------------	-----	----

Data are merely indicative and are not bindin.



Certificato
Nr 50 100 7925



AQUARAMA®

CAR WASH SYSTEM

www.aquarama.it